

**CHC
BOND & NON-BOND PROJECTS**

April 20, 2016

EXISTING CONSTRUCTION FOR BOND PROJECTS

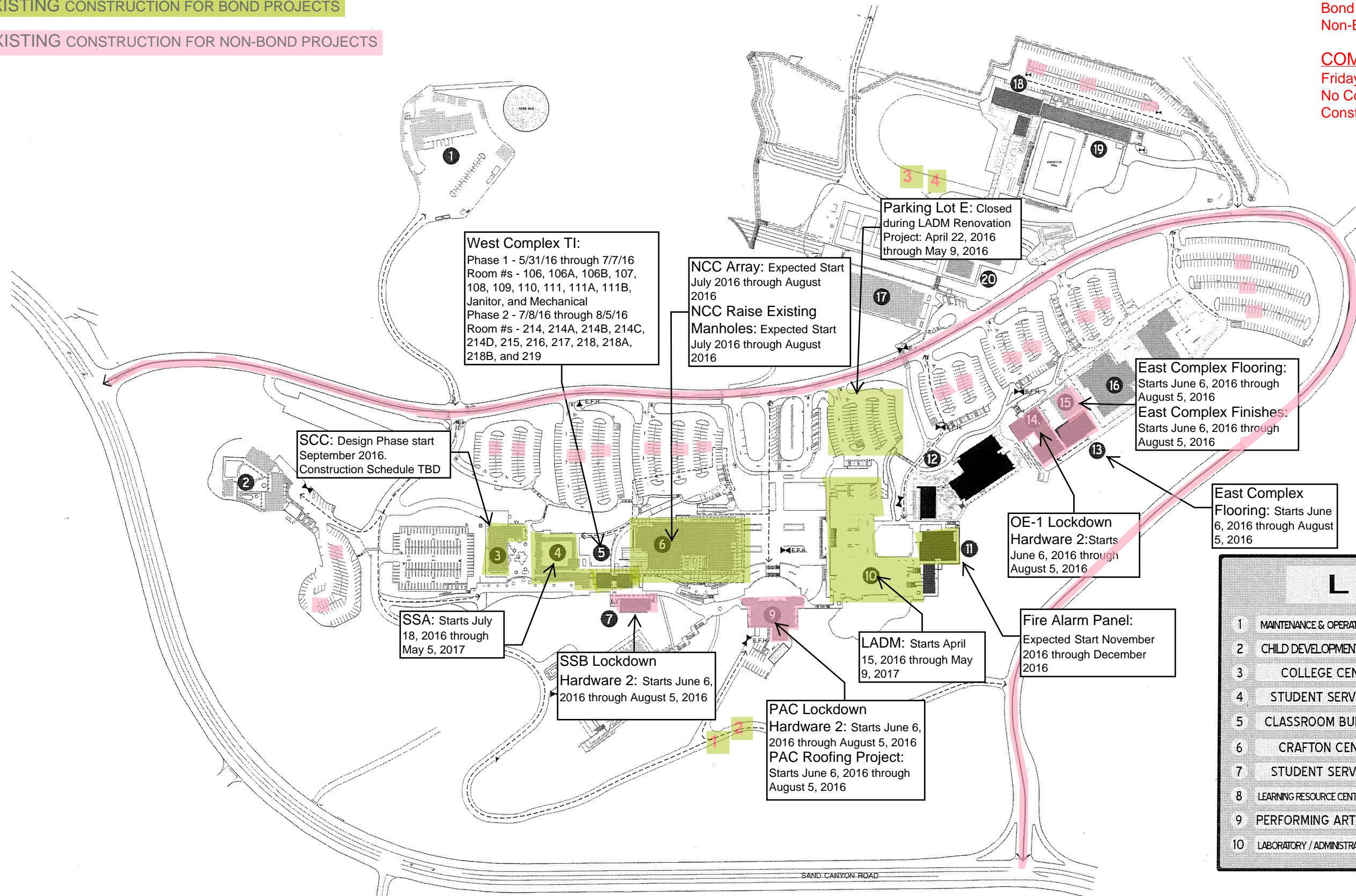
EXISTING CONSTRUCTION FOR NON-BOND PROJECTS

NOTES:

- Dates are for construction duration only.
- Contact information:
Office: 909-435-4159
Bond - Brooke Duncan
Non-Bond - Mike Wickham

COMMENCEMENT DATE:

Friday, May 27, 2016
No Construction Activities
Construction Shutdown



LEGEND	
1	MAINTENANCE & OPERATIONS / M&O
2	CHILD DEVELOPMENT CENTER
3	COLLEGE CENTER
4	STUDENT SERVICES A
5	CLASSROOM BUILDINGS
6	CRAFTON CENTER
7	STUDENT SERVICES B
8	LEARNING RESOURCE CENTER / LIBRARY
9	PERFORMING ART CENTER
10	LABORATORY / ADMINISTRATION / LADM
11	CHEMISTRY / HEALTH SCIENCE
12	NEW SCIENCE BUILDING
13	BOOKSTORE
14	OCCUPATIONAL EDUCATION 1 / OE-1
15	CLASSROOM AT BOOKSTORE
16	OCCUPATIONAL EDUCATION 2 / OE-2
17	GYMNASIUM
18	PHYSICAL EDUCATION COMPLEX / PE
19	AQUATICS CENTER / CRF
20	SCIENCE PORTABLES

TO INCLUDE CAMPUS DRIVE AND PARKING LOTS
Prop 39 LED Lighting:
Starts June 6, 2016 through August 5, 2016
(Contractor shall cone off no more than two (2) parking stalls at one time for exterior light work).

TO INCLUDE CAMPUS DRIVE AND PARKING LOTS
Non-Potable Water: Starts June 6, 2016 through August 5, 2016
(Campus Dr. shall be section for access during road work).

Churn 2: LADM and SSA
moves after final completion 3rd Quarter 2017

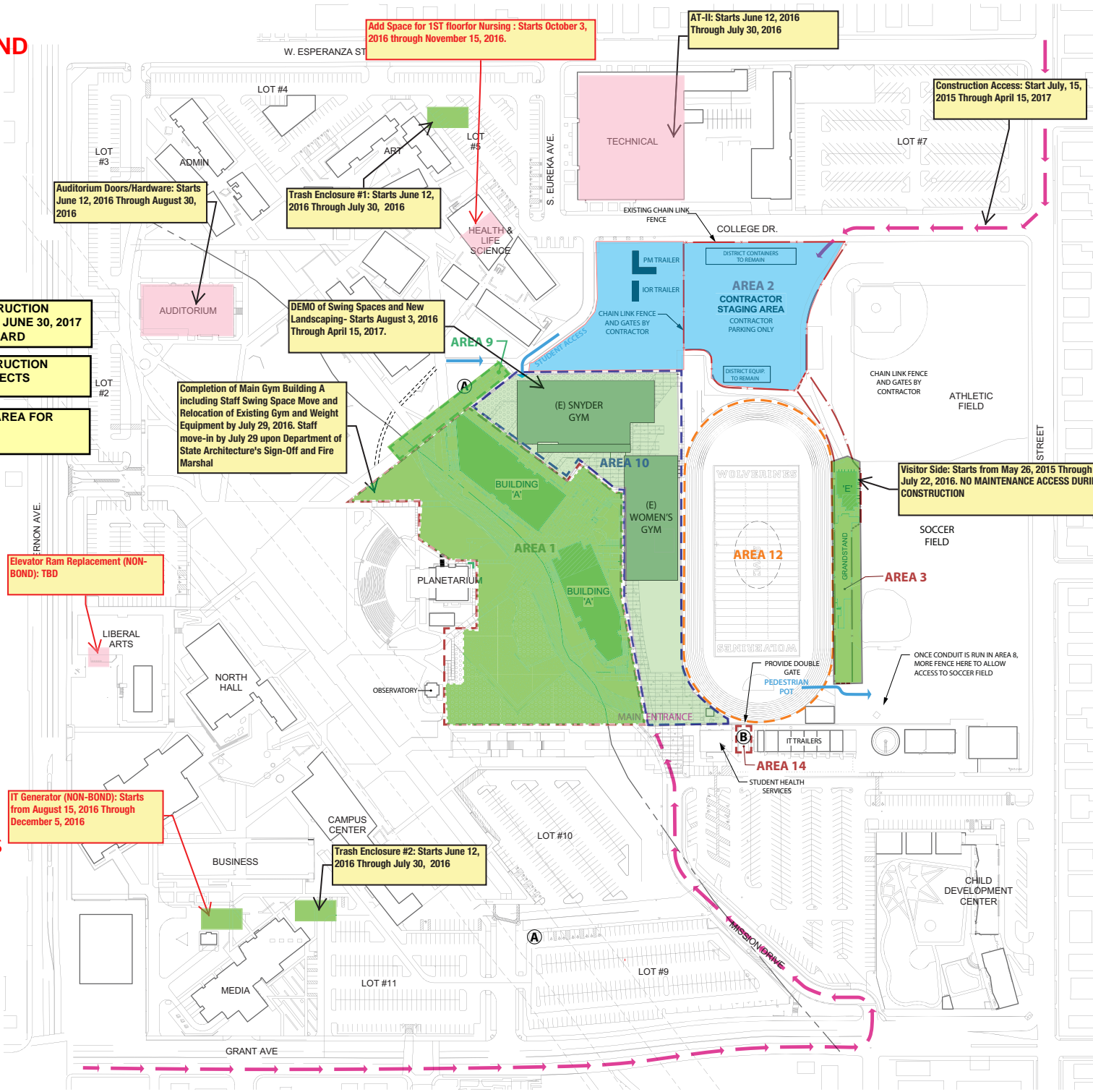
Container Moves:
From off-site location to 4 identified locations

Campus ARC Flash Study: P2S
Report expected June 2016
Contractor expected December 2016 for one (1) day for power shutdown during Winter break.

SBVC BOND & NON-BOND PROJECTS

May 23, 2016

- EXISTING CONSTRUCTION FENCE THROUGH JUNE 30, 2017 - KITCHELL/BRJ YARD
- EXISTING CONSTRUCTION FENCE FOR PROJECTS
- CONSTRUCTION AREA FOR PROJECTS



Notes:

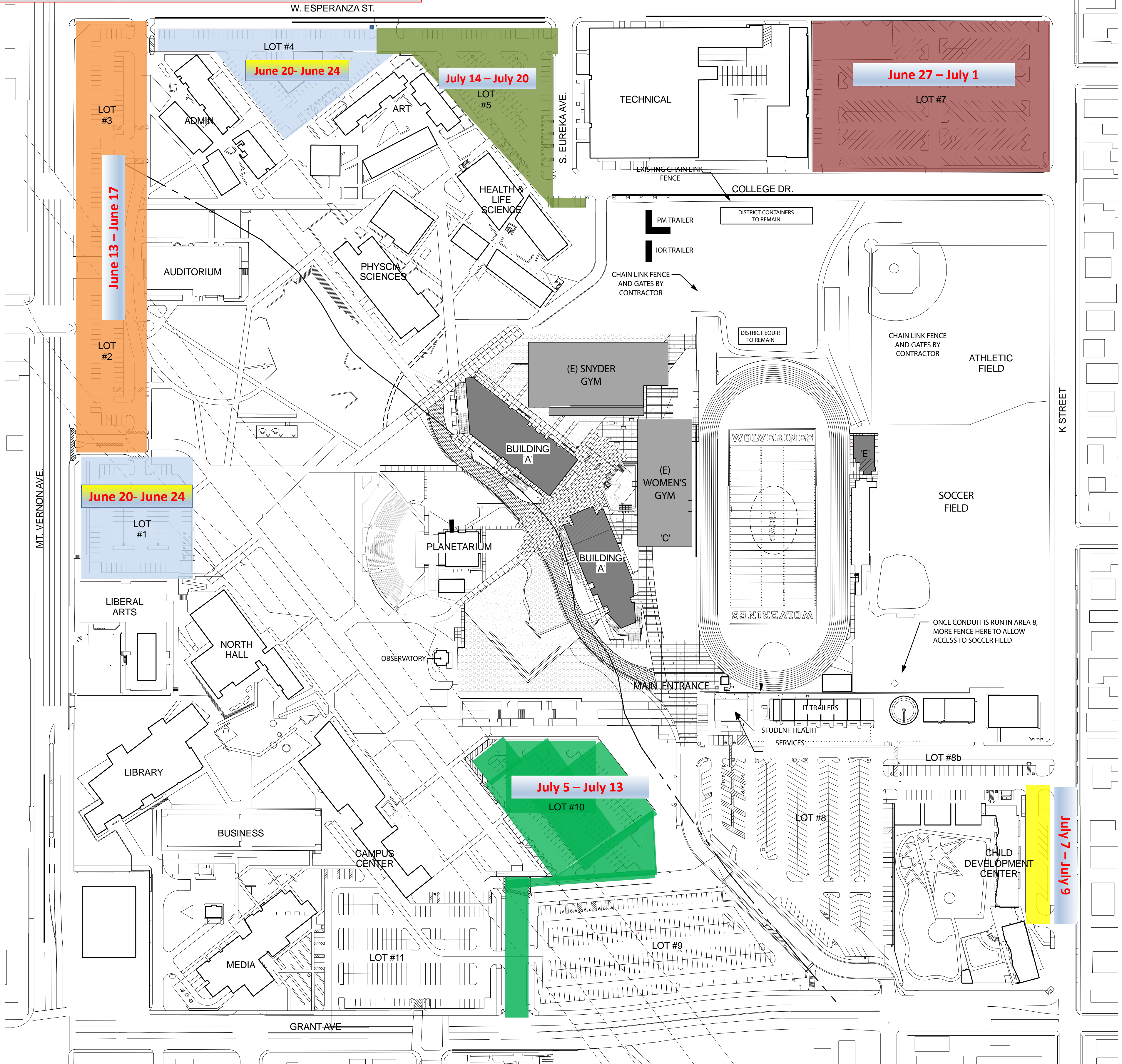
- Dates are for construction durations only.
- Contact information for the Campus Director of Facilities:
 - Robert Jenkins 909-693-0314
 - Contact information for Construction: Office: 909-693-3160
- Bond Program- Hussain Agah, Kitchell/BRJ
- Non-Bond Program- Ricardo Cano, Monica Garza, Kitchell

COMMENCEMENT DATE: Friday, May 27, 2016
 No Construction Activities; Construction Shutdown

- Campus-Wide Projects Non-Bond:**
- * Roof Building and Envelop Repairs: Starts from June 13, 2016 Through August 5, 2016
 - * Fire Alarm Panel Replacement: LA, Planetarium, Applied Tech, and M&O): Starts from August 15, 2016 Through November 18, 2016
 - * Campus-Wide Lockdown: Starts from April 19, 2016 Through August 12, 2016
 - * Campus-Wide parking Lots Resurfacing: Starts from June 13, 2016 Through July 29, 2016

NOTE: ALL CONSTRUCTION DATES ARE PLANNED "TENTATIVE" DATES AND SUBJECT TO CHANGE DUE TO UNFORESEEN CONDITIONS, WEATHER INCLEMENT, AND OUTSIDE REGULATORY AGENCIES' ACCEPTANCE. THE STAKEHOLDER WILL BE NOTIFIED OF ANY CHANGES.

**SBCCD-Valley College Campus Wide Parking Lot
Reconditioning Project**
Proposed Parking Lot Closure and Construction Dates.



Legend:	Lots 2 & 3	Lots 1 & 4	Lot 7	Lot 10	CDC LOT	Lot 5
Lot and Schedule	June 13 - June 17	June 20- June 24	June 27 - July 1	July 5 - July 13	July 7 - July 9	July 14 - July 20